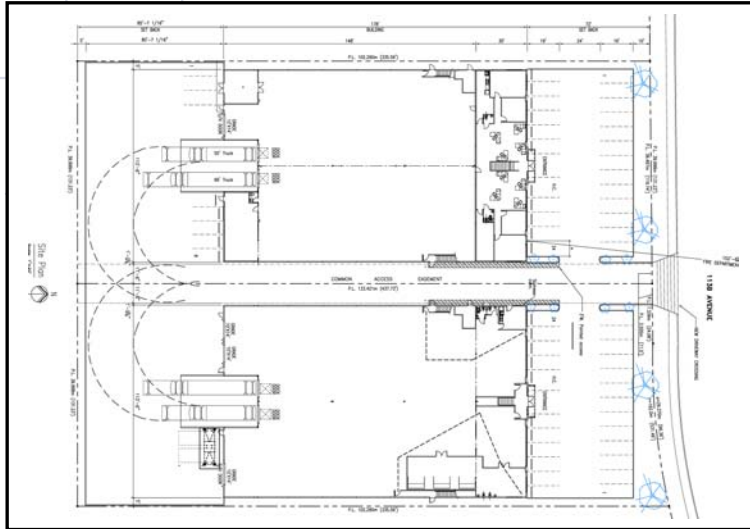


KENRAE ENTERPRISES LTD.



Sacré-Davey provided Structural, architectural, civil, electrical design and site development for a 2 building, separate client warehousing unit.

- 2 – 20,000 Sq. Ft. buildings (Canterbury Kitchens & Mancorp Industrial sales Ltd.)
- 5,000 Sq. Ft. Mezzanine Floor
- Equipment layouts for both facilities

